



BioStone ELISA

Version – 1.0.13

Manual

| Index | Page |
|--|-------|
| Install | 02-09 |
| General Information | 04 |
| Update Application | 04 |
| Update Kit & Dictionary | 04 |
| Offline Full Update | 05 |
| Setup Reader | 07 |
| Foundation Information | 08 |
| New User (Technician) | 08 |
| Language Selection | 09 |
| Switch User | 09 |
| Template preparation | 10 |
| Read | 13 |
| with Reader Device | 14 |
| Input Data Manually | 16 |
| Reports | 18 |
| Changing the Well name (Sample name) in the report | 18 |
| Plate Report | 20 |
| Owner Report | 21 |
| Kit Report | 22 |
| Backup & Restore | 23 |
| Troubleshooting | 24 |

Follow the steps below to install the BioStone ELISA program on your computer.
(BioStone ELISA 1.0.10 version is a version that does not require a license key. -May 2025)

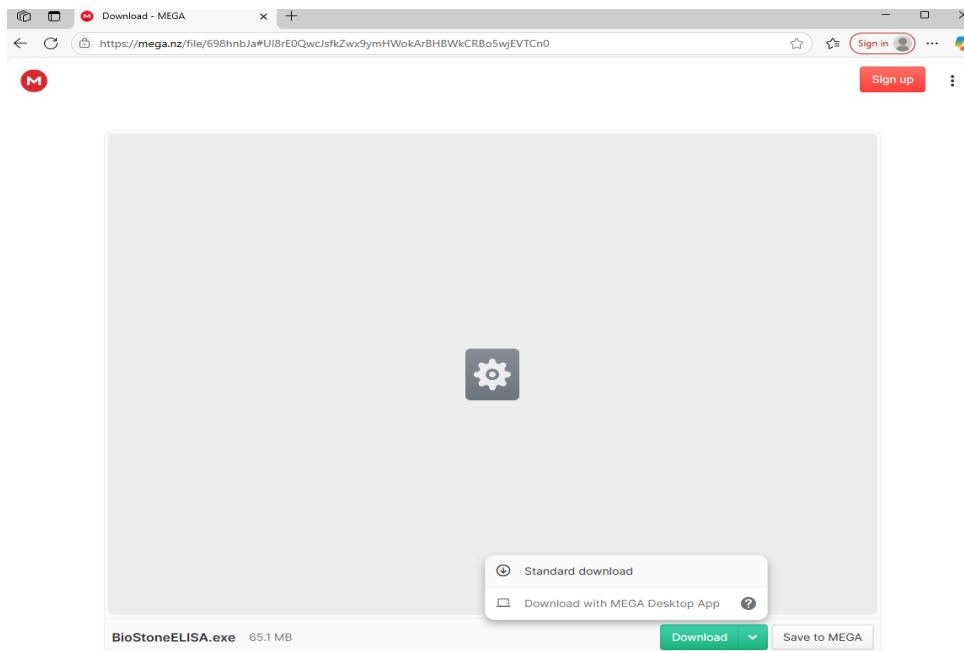
Step 1: Open an empty folder on your computer's C drive.

C:/BioStoneELISA

Step 2: Download the BioStoneELISA.exe file from the link sent to you.
Copy it to the folder you just opened.

C:/BioStoneELISA/BioStoneELISA.exe

Note: Antivirus on your computer may see this exe as suspicious.
Assign this application as a trusted application from your Antivirus panel.



Step 3: Click on the BioStoneELISA.exe file to start the installation.

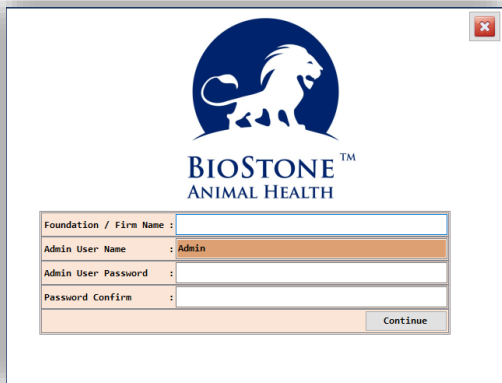
Step 4: When the installation is complete, copy the shortcut of the "BioStoneELISA.exe" file in «C:/BioStoneELISA/» to the desktop.

Please go to the next page

[Back to Index](#)

- The BioStone ELISA Program is ready to run.
- Create your company name and Admin password.

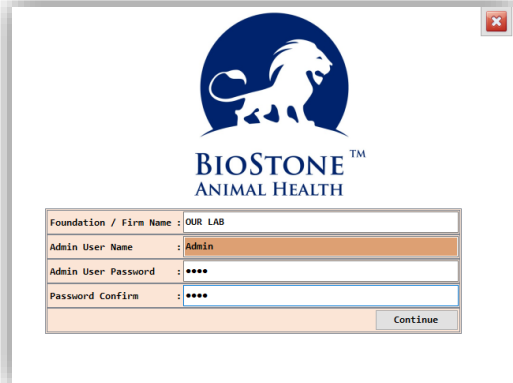
Warning: Write down the Admin User password on paper.



The screenshot shows the BioStone Animal Health logo at the top. Below it is a form with the following fields:

| | |
|--------------------------|-------|
| Foundation / Firm Name : | |
| Admin User Name : | Admin |
| Admin User Password : | |
| Password Confirm : | |

A "Continue" button is located at the bottom right of the form.

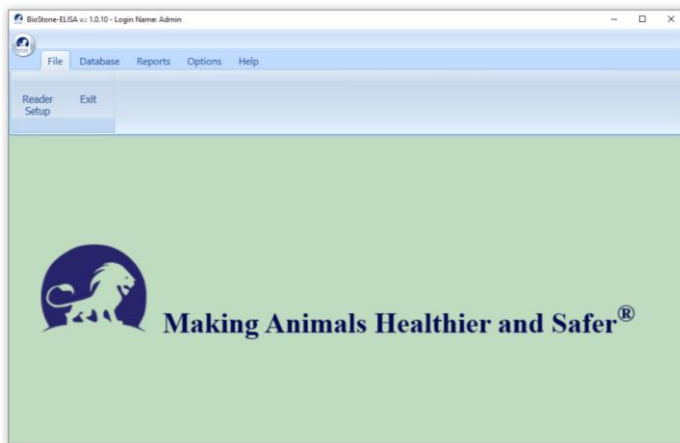


The screenshot shows the same BioStone Animal Health logo and form as the previous image, but with the following values entered:

| | |
|--------------------------|---------|
| Foundation / Firm Name : | OUR LAB |
| Admin User Name : | Admin |
| Admin User Password : | **** |
| Password Confirm : | **** |

A "Continue" button is located at the bottom right of the form.

- Reminders :**
- Admin user is only used to create a new user (user), update program, update Kit Constants and change Titer Constants.
 - You must create a new user to be able to read.
 - Technicians are not recommended to use the admin user.



- After the last few steps, you can use it safely.

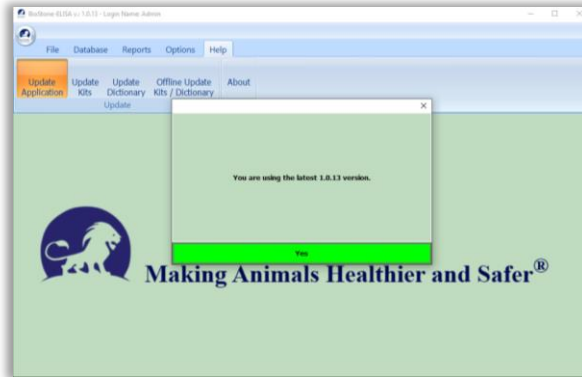
You can make the final edits by following the links below in order :

Please go to the next page

[Back to Index](#)

- Help
- Update Application

Click "Update Application" to upgrade the installation to the latest version.

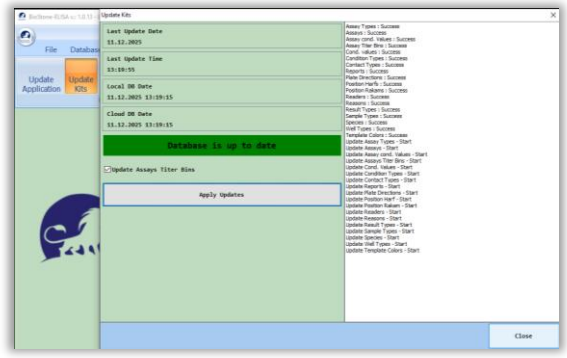
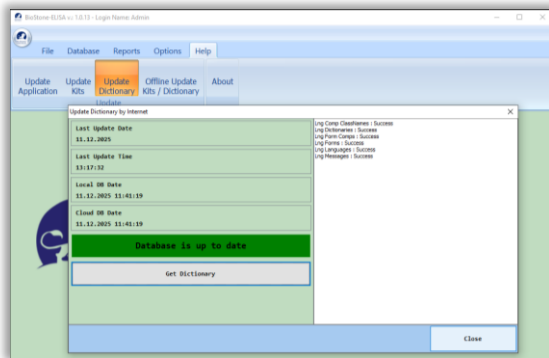
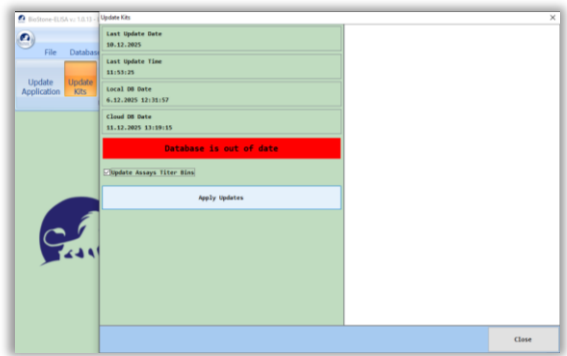
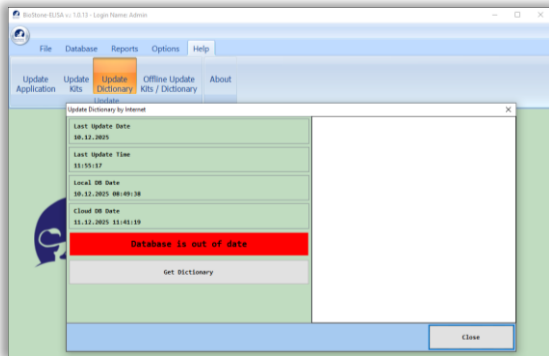


Update Kit & Dictionary

- Help
 - Update Kits
- Help
 - Update Dictionary

- It is recommended to update on initial installation.
- With this update you get the latest Kit validation terms and language dictionary.
- Only the 'Admin' user can perform the updates.

When the updates are completed, you will see a green notification. This indicates that the process was successful. You can close the page with the "Close" button.



Please go to the next page

[Back to Index](#)

Offline BioStone ELISA program update for PCs that are not connected to the internet or have limited internet access.

The BioStone ELISA program may require three types of data updates:

1- Biostone ELISA program exe update.

This update includes Reader adjustments, additions, menu updates, and report corrections.

2- Kit update.

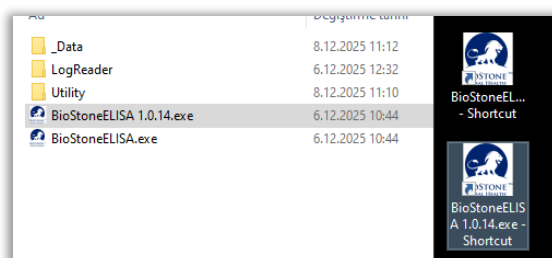
This update includes new kits, parameter and formula updates for existing kits, and titer value updates.

3- Language dictionary update

This update includes text and spelling corrections in various languages.

OFFLINE EXE UPDATE

- The user requests the latest version of the exe from BioStone headquarters.
- After the request is verified, the new exe will be emailed to you.
The exe you receive (for example: BioStone ELISA 1.0.14.exe) will include the version number
- Copy the exe file you received into the folder where your Biostone ELISA program is located.
(Please do not modify or delete the old exe file or other folders.)
- Copy the new exe shortcut to your desktop and run it.
(Delete the old exe shortcut from your desktop. You'll now use the new shortcut.)
- Log in as the Admin user and you'll see the program version in the top left corner of the screen.
You can start working with any technician user.



Notes:

Online exe update on unrestricted PCs connected to the internet: This is done by clicking the «Help-> Update Application» button with the Admin user.

OFFLINE KIT & DICTIONARY UPDATE

- The user requests the latest kit/dictionary file from Biostone headquarters.

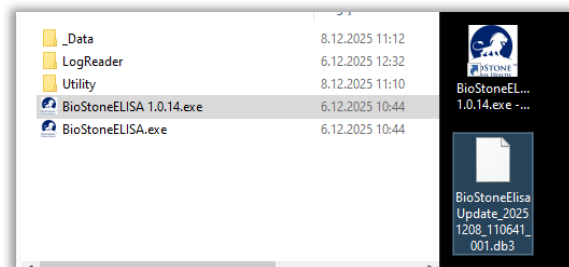
- After the request is checked, the DB file is sent to you via e-mail.

The database file you receive is a DB3 database file named

"BioStoneElisaUpdate_20251206_123221_001.db3."

The numbers in the file name may differ.

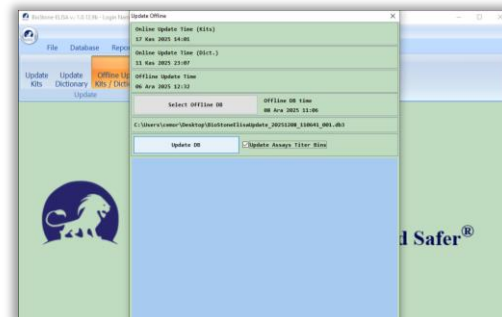
- This file is copied to the desktop.



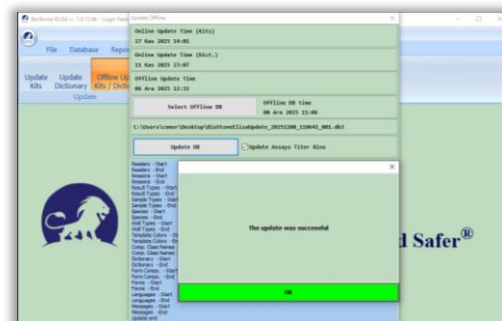
- Log into the program as the Admin user and select the "Help -> Offline Update Kits/Dictionary" button.



- On the next screen, click the "Select Offline DB" button and select the DB3 file you copied to the desktop.



- Click the "Update BD" button and wait for the process to complete. Select the "Update Assays Titer Bins" box. This option updates the titer groups.



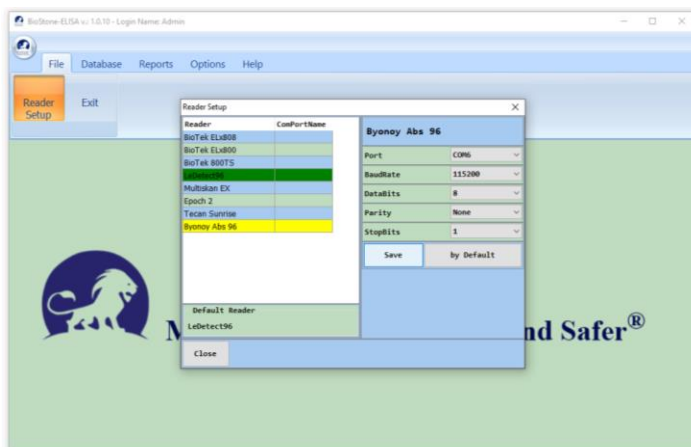
- You'll receive a successful message, and the process is complete.

Notes:

- Offline Kit and Dictionary update support is available in Version 1.0.13 and later.
- Please report any problems or errors you encounter during the offline update to BioStone headquarters. Provide screenshots of the error and a brief explanation of what you did.
- Please note that only the Admin user can perform all update operations.
- Perform reading and reporting operations with technician users.

- File
- Reader Setup

In the first installation, you must choose a name and define it as 'default' and save it.



Select the device you are using from the list.

Select the communication port (COM XX) where your device is active.

Select the BaudRate (where your device is active) (Usually this value can be 9600,38400,or 115200.)

Select the Databits (where your device is active) (Usually this value can be «8»)

Select the Parity (where your device is active) (Usually this value can be «None»)

Select the StopBits (where your device is active) (Usually this value can be «1»)

Define the device by pressing the 'save' button.

And the 'by Default' button.

Please go to the next page

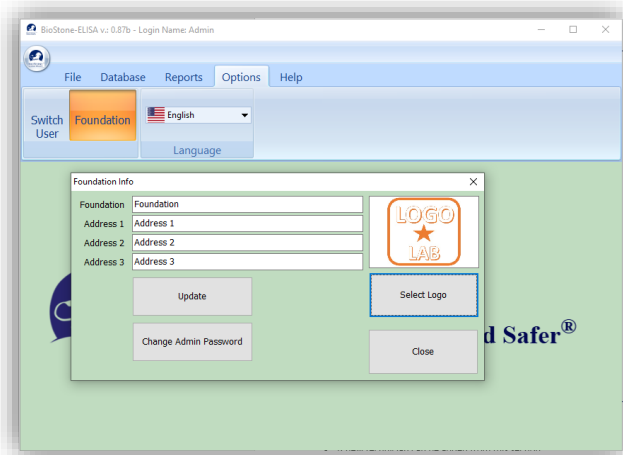
[Back to Index](#)

→ Options

→ Foundation

- Only the 'Admin' user can perform the Foundation Update.
- You can add laboratory name, address and logo (Recommended logo max. 1000px X 1000px.)
The information here will appear in the PDF report headers.
- You can change the ADMIN password.

Changes made with the "Update" button are saved.



New User (Technician)

→ Database

→ Technician

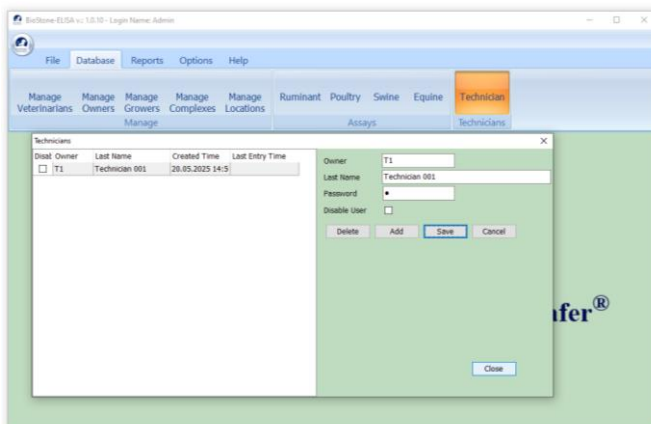
- A new technician can be added from this section.
- Technicians' password, name and code can be changed.

Step 1: Press the "Add" button without entering any data.

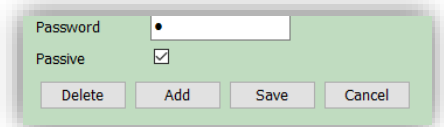
Step 2: Enter the technician information. The "Owner" section will be used as the technician code.

Step 3: After entering the technician password, press the "Save" button.

Step 4: Write down the technician name and password.



Disable the user :



- The "Passive" option is ticked.
- The changes are saved with the "Save" button.

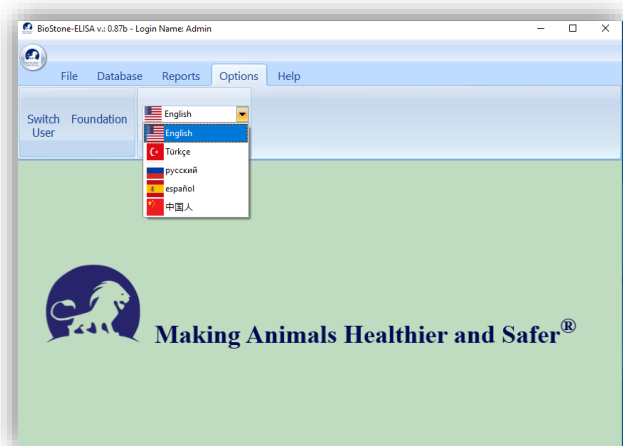
Please go to the next page

[Back to Index](#)

→ Options

→ Language

- All users can choose language.
- Please report any translation errors to BioStone.
- With the 'Help->Update Dictionary' option you can have the latest revisions.

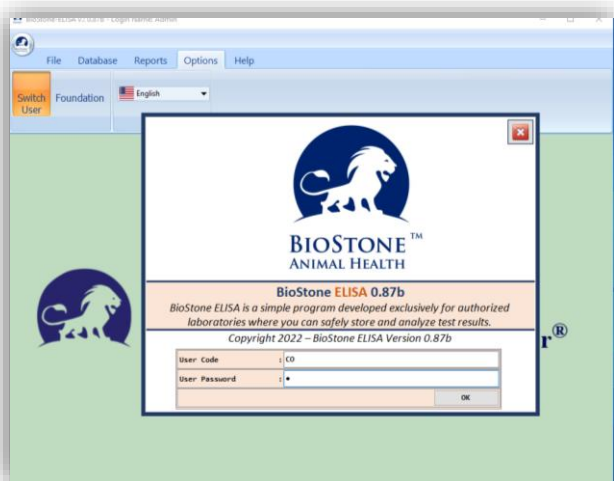


Switch User

→ Options

→ Switch User

- All users can use this screen.
- The 'Switch User' screen is the same as the opening screen of the program.
- It is designed for easy switching between users.



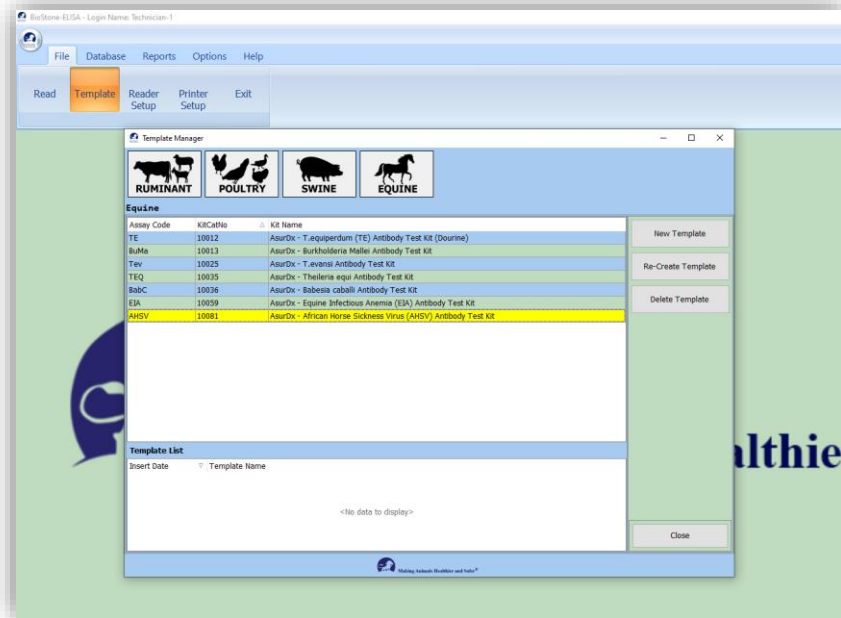
Congratulations, you have completed the necessary settings for the first installation.

Now you can prepare a template and perform your readings with the newly created technical user.

[Back to Index](#)

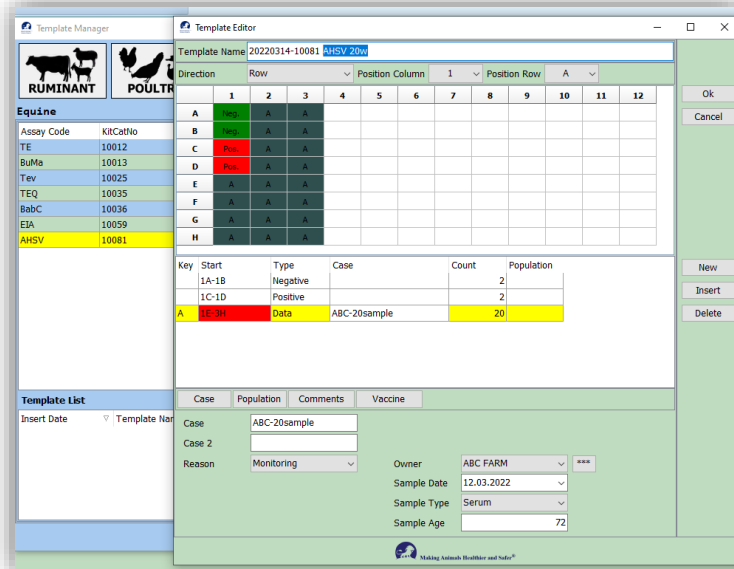
- File
- Template

- Step-1** -Assay group is selected. (Ruminant / Poultry / Swine / Equine)
 -The kit to be used is selected. (In the example 10081 AHSV was selected.)
 -A new one is created by clicking the "New Template" button for each new reading.



Admin is not authorized in this section. Technicians only.

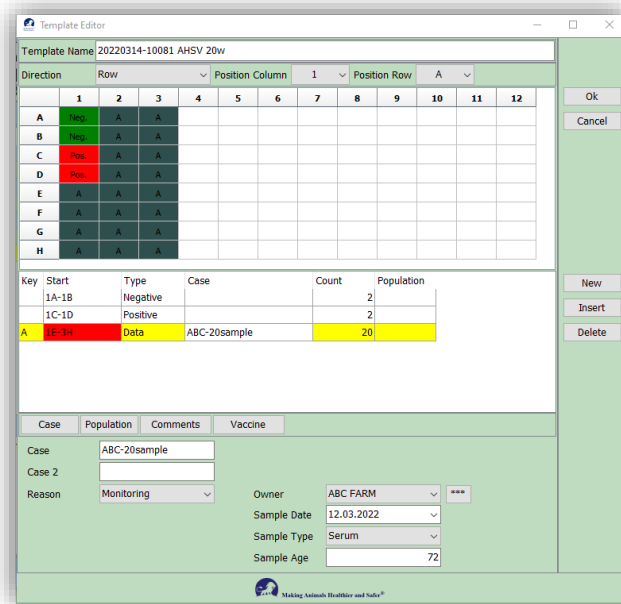
- Step-2** The program generates a "Template Name" name by default. You can change or add this name. For example : ' 20220314-10081 '



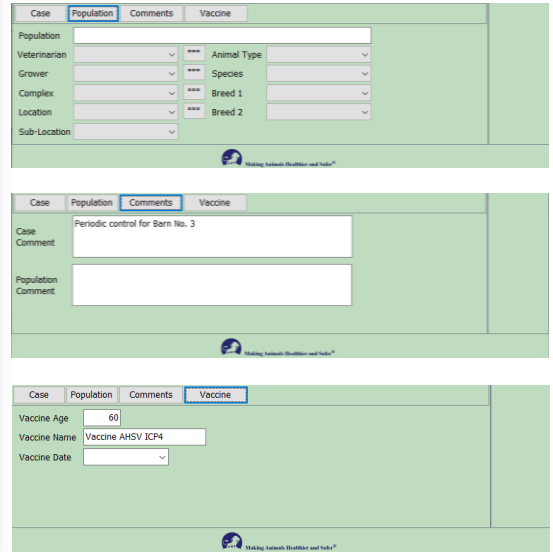
'Direction', 'Position Column' and 'Position Row' are used to determine the plate position.

[Back to Index](#)

Step-3 In the "Count" column, enter the 'Positive Control', 'Negative Control' and 'Samples'.



Sub tabs :



- CASE Tab : **Required fields** : 'Owner', 'Case' and 'Sample Date'.
- POPULATION Tab : Optional fields.
- COMMENTS Tab : Optional annotation fields.
- VACCINE Tab : Optional vaccine information fields.

REMINDER :

- While preparing the template, attention should be paid to the selection of the Kit.
- Template Name' contains the kit number and date by default. (Can be changed)
- Check the layout of the planned plate and template plate twice before reading it.
- For data security, every reading is recorded and cannot be deleted.

Examples of using a partial plate:

Neg Control : 1
 Pos Control : 2
 Samples : 35
 Case : 1
 Direction : Row
 Position Col. : 8
 Position Row : C

Template Editor
 Template Name: 20220314-10011 MG Ab - 35wl

| Direction | Row | Position Column | 8 | Position Row | C | | | | | | | |
|-----------|-----|-----------------|---|--------------|---|---|---|------|---|----|----|----|
| | 1 | 2 | 3 | 4 | 5 | 6 | 7 | 8 | 9 | 10 | 11 | 12 |
| A | | | | | | | | | A | A | A | A |
| B | | | | | | | | | A | A | A | A |
| C | | | | | | | | Pos. | A | A | A | A |
| D | | | | | | | | Pos. | A | A | A | A |
| E | | | | | | | | Pos. | A | A | A | A |
| F | | | | | | | | | A | A | A | A |
| G | | | | | | | | | A | A | A | A |
| H | | | | | | | | | A | A | A | A |

| Key | Start | Type | Case | Count | Population |
|-----|--------|----------|------|-------|------------|
| | 8C-8C | Negative | | | 1 |
| | 8D-8E | Positive | | | 2 |
| A | 8F-12H | Data | | | 35 |

Case Population Comments Vaccine

Case 2

Reason Owner Sample Date Sample Type Sample Age

Neg Control : 3
 Pos Control : 3
 Samples : 12-30-2-46
 Case : 4
 Direction : Row
 Position Col. : 1
 Position Row : A

Template Editor
 Template Name: 20220314-10011 MG Ab - Multiple clients - 4

| Direction | Row | Position Column | 1 | Position Row | A | | | | | | | |
|-----------|------|-----------------|---|--------------|---|---|---|---|---|----|----|----|
| | 1 | 2 | 3 | 4 | 5 | 6 | 7 | 8 | 9 | 10 | 11 | 12 |
| A | Neg. | A | A | B | B | B | C | D | D | D | D | D |
| B | Neg. | A | A | B | B | B | C | D | D | D | D | D |
| C | Neg. | A | A | B | B | B | B | D | D | D | D | D |
| D | Pos. | A | B | B | B | B | B | D | D | D | D | D |
| E | Pos. | A | B | B | B | B | B | D | D | D | D | D |
| F | Pos. | A | B | B | B | B | B | D | D | D | D | D |
| G | A | A | B | B | B | B | B | D | D | D | D | D |
| H | A | A | B | B | B | B | B | D | D | D | D | D |

| Key | Start | Type | Case | Count | Population |
|-----|--------|----------|---------------------|-------|------------|
| | 1A-1C | Negative | | | 3 |
| | 1D-1F | Positive | | | 3 |
| A | 1G-3B | Data | ABC -12sample | | 12 |
| B | 3C-6H | Data | ZYC -4sample | | 30 |
| C | 7A-7B | Data | DEF - 2sample | | 2 |
| D | 7C-12H | Data | QWR Farm - 46sample | | 46 |

Case Population Comments Vaccine

Case QWR Farm - 46sample

Case 2

Reason Owner ABC FARM Sample Date 13.03.2022 Sample Type Serum Sample Age

Neg Control : 3
 Pos Control : 3
 Samples : 12-30-2-46
 Case : 4
 Direction : Column
 Position Col. : 1
 Position Row : A

Template Editor
 Template Name: 20220314-10011 MG Ab - Multiple clients - 4

| Direction | Column | Position Column | 1 | Position Row | A | | | | | | | |
|-----------|--------|-----------------|------|--------------|------|------|---|---|---|----|----|----|
| | 1 | 2 | 3 | 4 | 5 | 6 | 7 | 8 | 9 | 10 | 11 | 12 |
| A | Neg. | Neg. | Neg. | Pos. | Pos. | Pos. | A | A | A | A | A | A |
| B | A | A | A | A | A | A | B | B | B | B | B | B |
| C | B | B | B | B | B | B | B | B | B | B | B | B |
| D | B | B | B | B | B | B | B | B | B | B | B | B |
| E | C | C | D | D | D | D | D | D | D | D | D | D |
| F | D | D | D | D | D | D | D | D | D | D | D | D |
| G | D | D | D | D | D | D | D | D | D | D | D | D |
| H | D | D | D | D | D | D | D | D | D | D | D | D |

| Key | Start | Type | Case | Count | Population |
|-----|--------|----------|---------------------|-------|------------|
| | A1-A3 | Negative | | | 3 |
| | A4-A6 | Positive | | | 3 |
| A | A7-B6 | Data | ABC -12sample | | 12 |
| B | B7-D12 | Data | ZYC -4sample | | 30 |
| C | E1-E2 | Data | DEF - 2sample | | 2 |
| D | E3-H12 | Data | QWR Farm - 46sample | | 46 |

Case Population Comments Vaccine

Case QWR Farm - 46sample

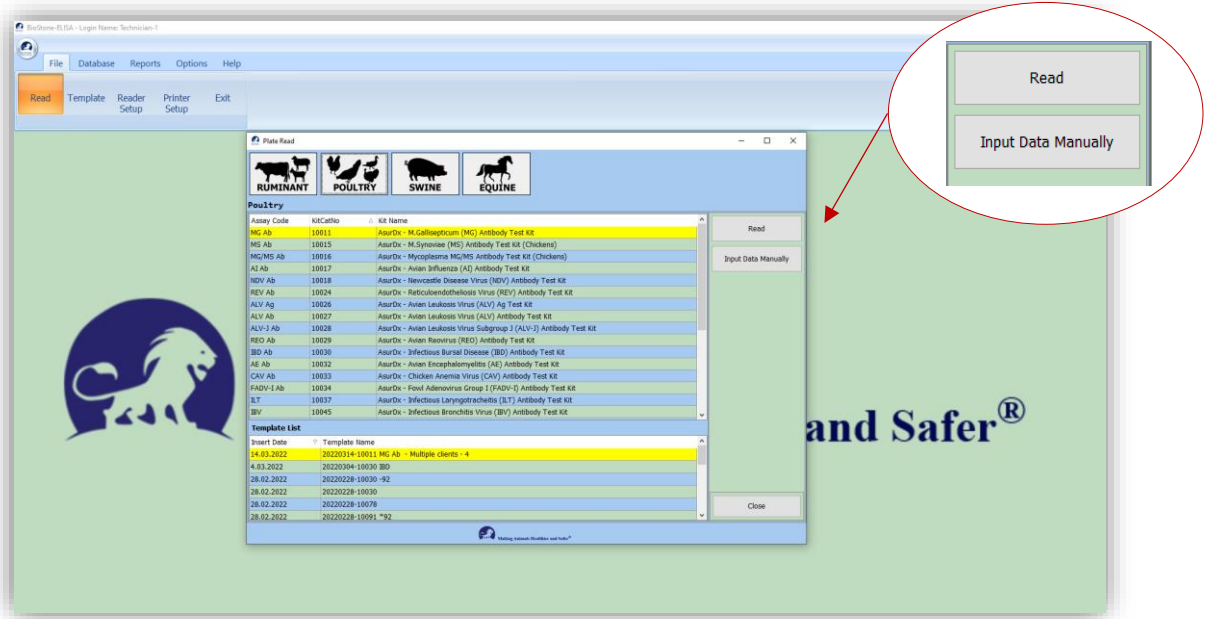
Case 2

Reason Owner ABC FARM Sample Date 13.03.2022 Sample Type Serum Sample Age

[Back to Index](#)



- File
- Read

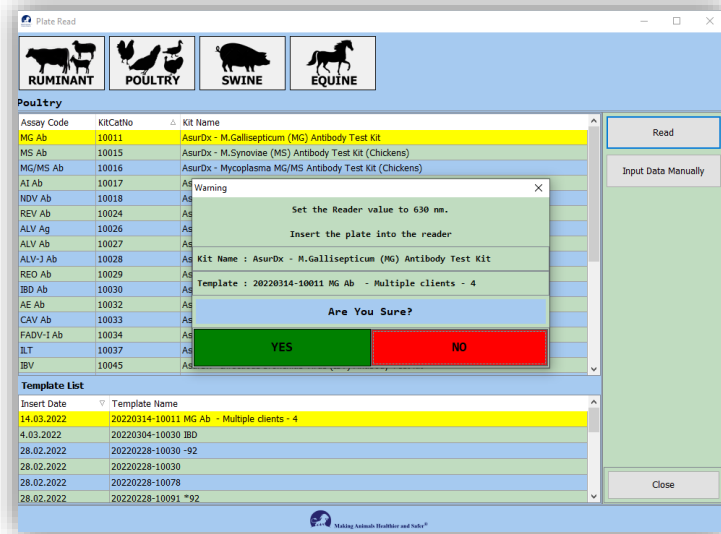


Check your selection for Kit and Template File.

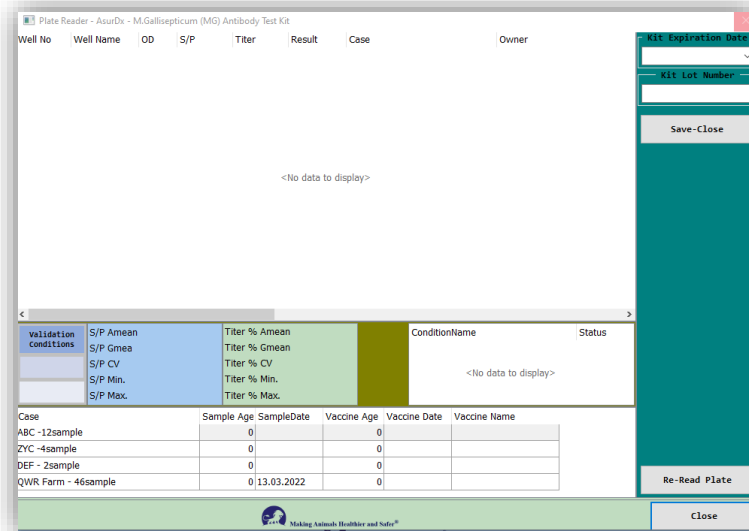
- “Read” button : Reads from the reader.
- “Input Data Manually” button : OD values can be entered manually.
(Copy-Paste can be made from any file.)

with Reader Device :

- Step-1** - The reader is turned on and the plate is placed in the reader.
- Assay group is selected. (Ruminant / Poultry / Swine / Equine)
- The kit to be used is selected. (In the example 10011 MG Ab was selected.)
- Press the 'Read' button.
- The program displays the selected Kit and Template name and asks for confirmation.



- Step-2** - The scanning process may take 1 minute or more.
- The following screen is displayed while reading.
- In case of error or problem, it can be read again with the 'Re-Read Plate' button.



[Back to Index](#)



with Reader Device :

Step-3 OD values read from the reader can be examined here.

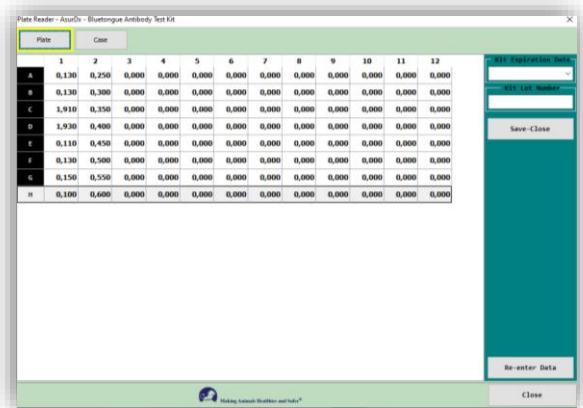
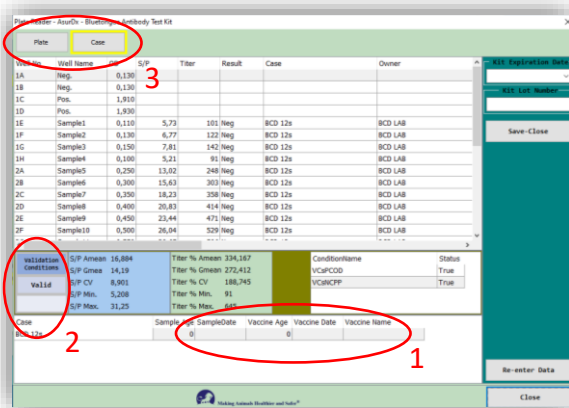
Vaccination information for each "Case" can be optionally entered at the bottom of the screen. (1)

If the test validation is correct, "Validation Conditions : Valid" is displayed. (2)

See the readings on the plate design figure. (Plate button) (3)

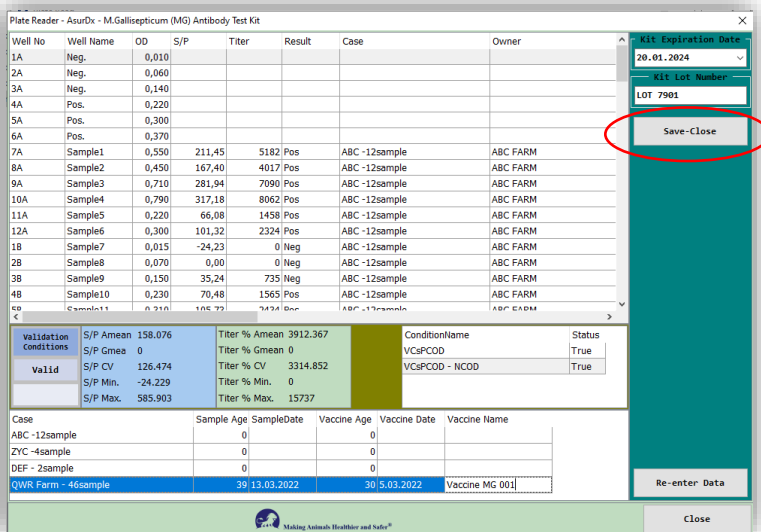
CAUTION :

- If there is a "Validation Conditions : Invalid" warning, positive and negative control values are inconsistent.
- Check the kit constants. If there is any inconsistency with the data in the manual, do the kit update and read it again immediately.
- Read the plate with the program provided by the device manufacturer and compare the results.



Step-4 'Kit Expiration Date' and 'Kit Lot Number' fields must be filled in mandatory.

Press the 'Save-Close' button to save the transaction.



Manual Read – Copy/Paste :

Step-1 Copy the data in the Excel or other file.

| AsurDx™ M. Gallisepticum (MG) Antibody Test Kit | | | | | | | | | | | | |
|---|---------|----------|----------|----------|----------|----------|----------|----------|----------|----------|----------|----------|
| PLATE LAYOUT DIAGRAM | | | | | | | | | | | | |
| | 1 | 2 | 3 | 4 | 5 | 6 | 7 | 8 | 9 | 10 | 11 | 12 |
| A | Neg1 | Sample5 | Sample13 | Sample21 | Sample29 | Sample37 | Sample45 | Sample53 | Sample61 | Sample69 | Sample77 | Sample85 |
| B | Neg2 | Sample6 | Sample14 | Sample22 | Sample30 | Sample38 | Sample46 | Sample54 | Sample62 | Sample70 | Sample78 | Sample86 |
| C | Pos1 | Sample7 | Sample15 | Sample23 | Sample31 | Sample39 | Sample47 | Sample55 | Sample63 | Sample71 | Sample79 | Sample87 |
| D | Pos2 | Sample8 | Sample16 | Sample24 | Sample32 | Sample40 | Sample48 | Sample56 | Sample64 | Sample72 | Sample80 | Sample88 |
| E | Sample1 | Sample9 | Sample17 | Sample25 | Sample33 | Sample41 | Sample49 | Sample57 | Sample65 | Sample73 | Sample81 | Sample89 |
| F | Sample2 | Sample10 | Sample18 | Sample26 | Sample34 | Sample42 | Sample50 | Sample58 | Sample66 | Sample74 | Sample82 | Sample90 |
| G | Sample3 | Sample11 | Sample19 | Sample27 | Sample35 | Sample43 | Sample51 | Sample59 | Sample67 | Sample75 | Sample83 | Sample91 |
| H | Sample4 | Sample12 | Sample20 | Sample28 | Sample36 | Sample44 | Sample52 | Sample60 | Sample68 | Sample76 | Sample84 | Sample92 |
| OD630 INPUT | | | | | | | | | | | | |
| | 1 | 2 | 3 | 4 | 5 | 6 | 7 | 8 | 9 | 10 | 11 | 12 |
| A | 0.01 | 0.06 | 0.14 | 0.22 | 0.3 | 0.37 | 0.55 | 0.45 | 0.71 | 0.79 | 0.22 | 0.3 |
| B | 0.015 | 0.07 | 0.15 | 0.23 | 0.31 | 0.38 | 0.56 | 0.46 | 0.72 | 0.8 | 0.23 | 0.31 |
| C | 0.7 | 0.08 | 0.16 | 0.24 | 0.32 | 0.39 | 0.57 | 0.47 | 0.73 | 0.9 | 0.24 | 0.32 |
| D | 0.72 | 0.09 | 0.17 | 0.25 | 0.33 | 0.4 | 0.58 | 0.48 | 0.74 | 1 | 0.25 | 0.33 |
| E | 0.02 | 0.1 | 0.18 | 0.26 | 0.34 | 0.41 | 0.59 | 0.49 | 0.75 | 1.1 | 0.26 | 0.34 |
| F | 0.03 | 0.11 | 0.19 | 0.27 | 0.35 | 0.42 | 0.6 | 0.5 | 0.76 | 1.2 | 0.27 | 0.35 |
| G | 0.04 | 0.12 | 0.2 | 0.28 | 0.36 | 0.43 | 0.61 | 0.6 | 0.77 | 1.3 | 0.28 | 0.36 |
| H | 0.05 | 0.13 | 0.21 | 0.29 | 0.365 | 0.44 | 0.62 | 0.7 | 0.78 | 1.4 | 0.29 | 0.365 |

Step-2 Paste the data by pressing the “Paste from Clipboard” button at the top of the “Manual Read” screen.
Then finish the recording process by pressing the “Save Close” button.

| Manual Read | | | | | | | | | | | | |
|-------------|------|------|------|-----|-----|------|------|------|------|-----|------|------|
| | 1 | 2 | 3 | 4 | 5 | 6 | 7 | 8 | 9 | 10 | 11 | 12 |
| A | 0.13 | 0.25 | 0.65 | 1.1 | 1.9 | 3.4 | 0.15 | 0.16 | 0.18 | 0.2 | 0.21 | 0.22 |
| B | 0.13 | 0.3 | 0.7 | 1.2 | 2 | 3.5 | 0.15 | 0.16 | 0.18 | 0.2 | 0.21 | 0.22 |
| C | 1.91 | 0.35 | 0.75 | 1.3 | 2.1 | 0.15 | 0.15 | 0.16 | 0.18 | 0.2 | 0.21 | 0.22 |
| D | 1.93 | 0.4 | 0.8 | 1.4 | 2.5 | 0.15 | 0.15 | 0.16 | 0.18 | 0.2 | 0.21 | 0.22 |
| E | 0.11 | 0.45 | 0.85 | 1.5 | 3 | 0.15 | 0.15 | 0.16 | 0.18 | 0.2 | 0.21 | 0.22 |
| F | 0.13 | 0.5 | 0.9 | 1.6 | 3.1 | 0.15 | 0.15 | 0.16 | 0.18 | 0.2 | 0.21 | 0.22 |
| G | 0.15 | 0.55 | 0.95 | 1.7 | 3.2 | 0.15 | 0.15 | 0.16 | 0.18 | 0.2 | 0.21 | 0.22 |
| H | 0.1 | 0.6 | 1 | 1.8 | 3.3 | 0.15 | 0.15 | 0.16 | 0.18 | 0.2 | 0.21 | 0.22 |

Manual Read – Copy/Paste :

Step-3 OD values read from the reader can be examined here.

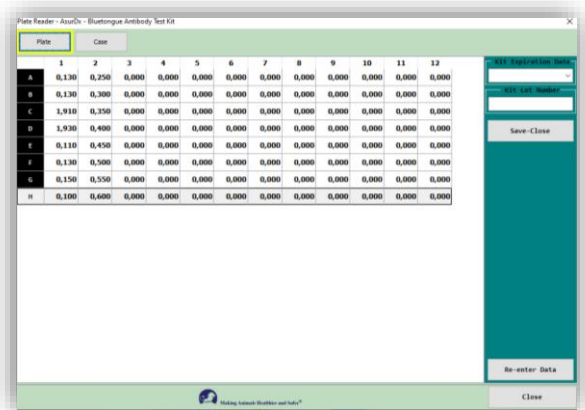
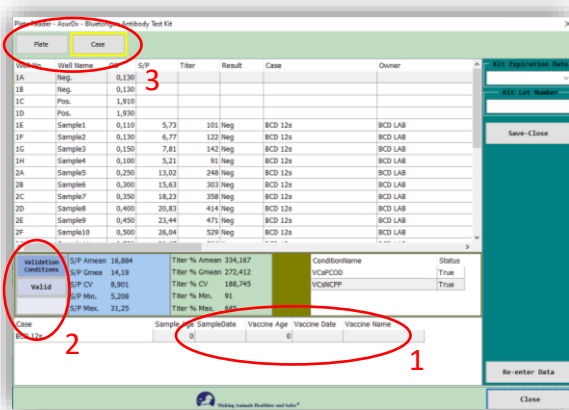
Vaccination information for each "Case" can be optionally entered at the bottom of the screen. (1)

If the test validation is correct, "Validation Conditions : Valid" is displayed. (2)

See the readings on the plate design figure. (Plate button) (3)

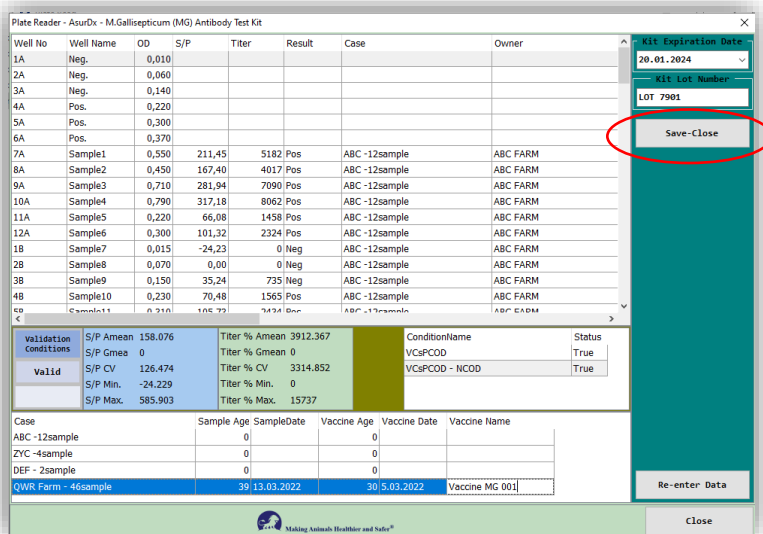
CAUTION :

- If there is a "Validation Conditions : Invalid" warning, positive and negative control values are inconsistent.
- Check the kit constants. If there is any inconsistency with the data in the manual, do the kit update and read it again immediately.
- Read the plate with the program provided by the device manufacturer and compare the results.



Step-4 'Kit Expiration Date' and 'Kit Lot Number' fields must be filled in mandatory.

Press the 'Save-Close' button to save the transaction.

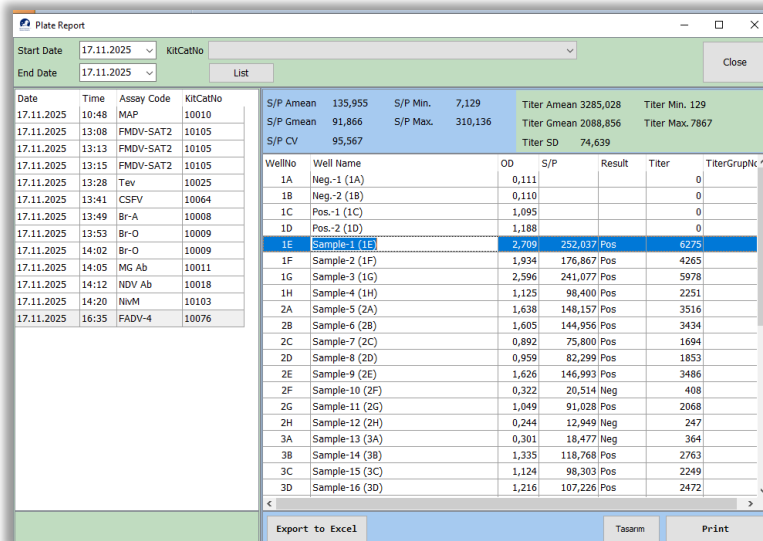


[Back to Index](#)



Changing the Well name (Sample name) in the report

- Reports
- Plate Report

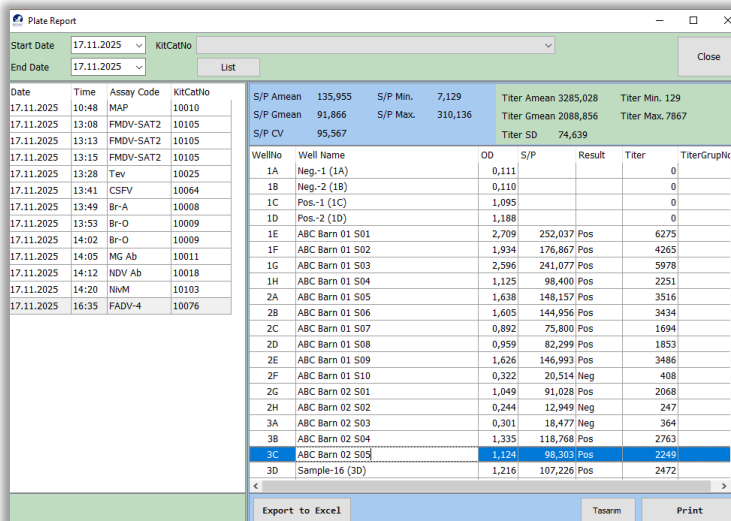


"Well Name" names can be changed on the "Plate Report" screen. Follow the steps below:

- Click the "Well Name" cell you want to change.
- Give the well a new name (Max. 16 characters).
- Enter the sample names in the sample template you prepared in the correct place.
- Click the "Print" button to view the report.

| AsurDx™ Fowl Adenov | | | | | |
|---------------------|-----------------|-----------------|-----------------|----------------|-------------------|
| PLATE | | | | | |
| | 1 | 2 | 3 | 4 | 5 |
| A | Neg1 | ABC Barn 01 S05 | ABC Barn 02 S03 | XYZ Lab 33-001 | KM432 U21-0001 Sa |
| B | Neg2 | ABC Barn 01 S06 | ABC Barn 02 S04 | XYZ Lab 33-002 | KM432 U21-0002 Sa |
| C | Pos1 | ABC Barn 01 S07 | ABC Barn 02 S06 | XYZ Lab 33-003 | KM432 U21-0003 Sa |
| D | Pos2 | ABC Barn 01 S08 | ABC Barn 02 S08 | DEF Lab 00001 | KM432 U21-0004 Sa |
| E | ABC Barn 01 S01 | ABC Barn 01 S09 | ABC Barn 02 S07 | DEF Lab 00002 | KM432 U21-0005 Sa |
| F | ABC Barn 01 S02 | ABC Barn 01 S10 | ABC Barn 02 S08 | DEF Lab 00003 | KM432 U21-0006 Sa |
| G | ABC Barn 01 S03 | ABC Barn 02 S01 | ABC Barn 02 S09 | DEF Lab 00004 | KM432 U21-0007 Sa |
| H | ABC Barn 01 S04 | ABC Barn 02 S02 | ABC Barn 02 S10 | DEF Lab 00005 | KM432 U21-0008 Sa |
| | | | | | |
| | | | | | |
| A | 0.111 | 1.638 | 0.301 | 0.184 | 3.104 |
| B | 0.11 | 1.605 | 1.335 | 0.255 | 2.346 |
| C | 1.095 | 0.892 | 1.124 | 0.371 | 0.996 |
| D | 1.188 | 0.959 | 1.216 | 0.292 | 0.727 |
| E | 2.709 | 1.626 | 2.407 | 3.308 | 2.198 |
| F | 1.934 | 0.322 | 1.537 | 3.283 | 0.333 |
| G | 2.596 | 1.049 | 1.226 | 3.129 | 0.953 |
| H | 1.125 | 0.244 | 2.643 | 3.159 | 1.313 |

Sample Excel template



Clicking the "Print" button will save the cell values to the database. "Well Name" names will only be permanently changed for the selected report.

The changes will take effect if the selected report is accessed from different reporting sections.

In the example, the well names of the last report in the Plate Report section, "17.11.2025 - 16:35 - FADV-4 - 10076" have been changed.

Changing well names is done by pressing the "Print" button and is irreversible. However, the program allows changing well names multiple times.

Changing the Well name (Sample name) in the report

PLATE REPORT

Delta Livestock Diagnostics Report Date : 17 Kas 2025
 Technician : T1
 Kit Name : AsuDi Fowl Adenovirus Group I (FADV-4) Antibody Test Kit
 Pos. Cutoff : >= 0.4
 Kit Lot# : FADV4-2512
 Expiry Date : 07 Ara 2026

Titer Group Frequency

| Titer Group | Count |
|-------------|-------|
| 0 | 0 |
| 1 | 1 |
| 2 | 8 |
| 3 | 9 |
| 4 | 5 |
| 5 | 2 |
| 6 | 2 |
| 7 | 2 |
| 8 | 2 |
| 9 | 1 |
| 10 | 0 |
| 11 | 0 |
| 12 | 0 |
| 13 | 0 |
| 14 | 0 |

| Case | Sample Age | Sample Date | Vaccine Age | Vaccine Name | Vaccine Date |
|-------------|------------|-------------|-------------|--------------|--------------|
| ABC Barn 01 | - | 16 Kas 2025 | - | - | - |
| ABC Barn 02 | - | 16 Kas 2025 | - | - | - |
| XYZ Lab 33 | - | 16 Kas 2025 | - | - | - |
| DEFG Lab | - | 16 Kas 2025 | - | - | - |
| KM432 UZ1 | - | 16 Kas 2025 | - | - | - |

| Well | Well Name | O.D. | PP | Result | Titer | Group | Case | Owner |
|------|-----------------|-------|--------|--------|-------|-------|-------------|----------|
| 1A | Neg-1 (1A) | 0.111 | 0.00 | 0 | 0 | 0 | | |
| 1B | Neg-2 (1B) | 0.110 | 0.00 | 0 | 0 | 0 | | |
| 1C | Pos-1 (1C) | 1.095 | 0.00 | 0 | 0 | 0 | | |
| 1D | Pos-2 (1D) | 1.188 | 0.00 | 0 | 0 | 0 | | |
| 1E | ABC Barn 01 S01 | 2.709 | 252.04 | Pos | 6275 | 6 | ABC Barn 01 | ABC Farm |
| 1F | ABC Barn 01 S02 | 1.934 | 176.87 | Pos | 4265 | 4 | ABC Barn 01 | ABC Farm |
| 1G | ABC Barn 01 S03 | 2.596 | 241.08 | Pos | 5978 | 6 | ABC Barn 01 | ABC Farm |
| 1H | ABC Barn 01 S04 | 1.125 | 98.40 | Pos | 2251 | 2 | ABC Barn 01 | ABC Farm |
| 2A | ABC Barn 01 S05 | 1.638 | 148.16 | Pos | 3516 | 4 | ABC Barn 01 | ABC Farm |
| 2B | ABC Barn 01 S06 | 1.605 | 144.96 | Pos | 3434 | 3 | ABC Barn 01 | ABC Farm |
| 2C | ABC Barn 01 S07 | 0.892 | 75.80 | Pos | 1894 | 2 | ABC Barn 01 | ABC Farm |
| 2D | ABC Barn 01 S08 | 0.959 | 82.30 | Pos | 1853 | 2 | ABC Barn 01 | ABC Farm |
| 2E | ABC Barn 01 S09 | 1.626 | 148.99 | Pos | 3486 | 3 | ABC Barn 01 | ABC Farm |
| 2F | ABC Barn 01 S10 | 0.322 | 20.51 | Neg | 406 | 0 | ABC Barn 01 | ABC Farm |
| 2G | ABC Barn 02 S01 | 1.049 | 91.03 | Pos | 2068 | 2 | ABC Barn 02 | ABC Farm |

PLATE REPORT

Delta Livestock Diagnostics Report Date : 17 Kas 2025
 Technician : T1
 Kit Name : AsuDi Fowl Adenovirus Group I (FADV-4) Antibody Test Kit
 Pos. Cutoff : >= 0.4
 Kit Lot# : FADV4-2512
 Expiry Date : 07 Ara 2026

| Well | Well Name | O.D. | PP | Result | Titer | Group | Case | Owner |
|------|-----------------|-------|--------|--------|-------|-------|-------------|----------|
| 2H | ABC Barn 02 S02 | 0.244 | 12.95 | Neg | 247 | 0 | ABC Barn 02 | ABC Farm |
| 3A | ABC Barn 02 S03 | 0.301 | 16.48 | Neg | 364 | 0 | ABC Barn 02 | ABC Farm |
| 3B | ABC Barn 02 S04 | 1.335 | 116.77 | Pos | 2763 | 3 | ABC Barn 02 | ABC Farm |
| 3C | ABC Barn 02 S05 | 1.124 | 98.30 | Pos | 2249 | 2 | ABC Barn 02 | ABC Farm |
| 3D | ABC Barn 02 S06 | 1.216 | 107.23 | Pos | 2472 | 2 | ABC Barn 02 | ABC Farm |
| 3E | ABC Barn 02 S07 | 2.407 | 222.74 | Pos | 5484 | 5 | ABC Barn 02 | ABC Farm |
| 3F | ABC Barn 02 S08 | 1.537 | 136.36 | Pos | 3264 | 3 | ABC Barn 02 | ABC Farm |
| 3G | ABC Barn 02 S09 | 1.226 | 106.20 | Pos | 2496 | 2 | ABC Barn 02 | ABC Farm |
| 3H | ABC Barn 02 S10 | 2.843 | 245.64 | Pos | 6101 | 6 | ABC Barn 02 | ABC Farm |
| 4A | Sample-21 (4A) | 0.184 | 7.13 | Neg | 129 | 0 | XYZ Lab 33 | XYZ Lab |
| 4B | Sample-22 (4B) | 0.255 | 14.02 | Neg | 269 | 0 | XYZ Lab 33 | XYZ Lab |
| 4C | Sample-23 (4C) | 0.371 | 25.27 | Neg | 511 | 0 | XYZ Lab 33 | XYZ Lab |
| 4D | Sample-24 (4D) | 0.292 | 17.60 | Neg | 345 | 0 | DEFG Lab | DEFG Lab |
| 4E | Sample-25 (4E) | 3.308 | 310.14 | Pos | 7867 | 8 | DEFG Lab | DEFG Lab |
| 4F | Sample-26 (4F) | 3.283 | 307.71 | Pos | 7800 | 8 | DEFG Lab | DEFG Lab |
| 4G | Sample-27 (4G) | 3.129 | 292.77 | Pos | 7388 | 7 | DEFG Lab | DEFG Lab |
| 4H | Sample-28 (4H) | 3.159 | 295.68 | Pos | 7468 | 7 | DEFG Lab | DEFG Lab |
| 5A | Sample-29 (5A) | 3.104 | 290.35 | Pos | 7321 | 7 | KM432 UZ1 | KM Lab |
| 5B | Sample-30 (5B) | 2.348 | 216.83 | Pos | 5306 | 5 | KM432 UZ1 | KM Lab |
| 5C | Sample-31 (5C) | 0.956 | 85.89 | Pos | 1941 | 2 | KM432 UZ1 | KM Lab |
| 5D | Sample-32 (5D) | 0.727 | 59.80 | Pos | 1308 | 1 | KM432 UZ1 | KM Lab |
| 5E | Sample-33 (5E) | 2.198 | 202.47 | Pos | 4942 | 5 | KM432 UZ1 | KM Lab |
| 5F | Sample-34 (5F) | 0.333 | 21.58 | Neg | 431 | 0 | KM432 UZ1 | KM Lab |
| 5G | Sample-35 (5G) | 0.983 | 81.72 | Pos | 1838 | 2 | KM432 UZ1 | KM Lab |
| 5H | Sample-36 (5H) | 1.313 | 116.63 | Pos | 2709 | 3 | KM432 UZ1 | KM Lab |

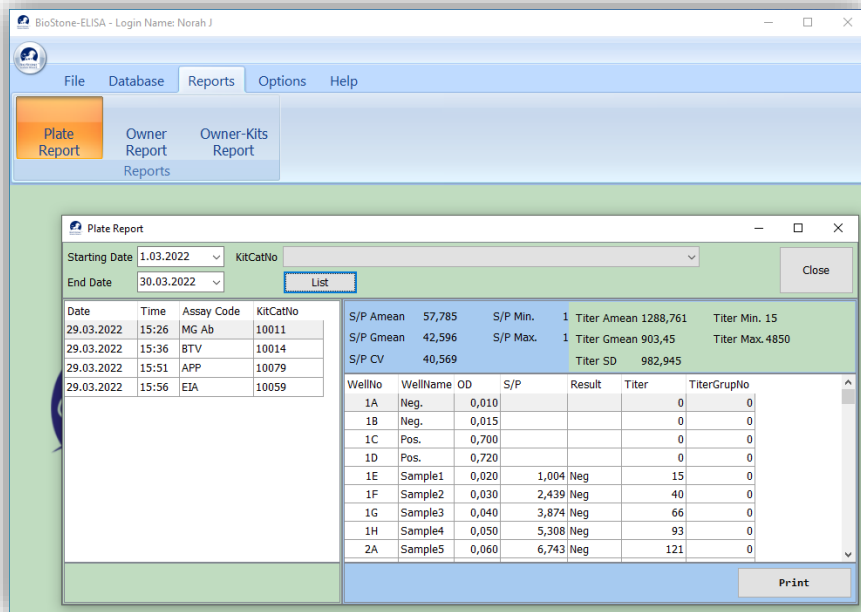
The report shows that the names have been changed up to cell "Sample-21(4A)".

You can return to the "Plate Report" screen to continue making changes.

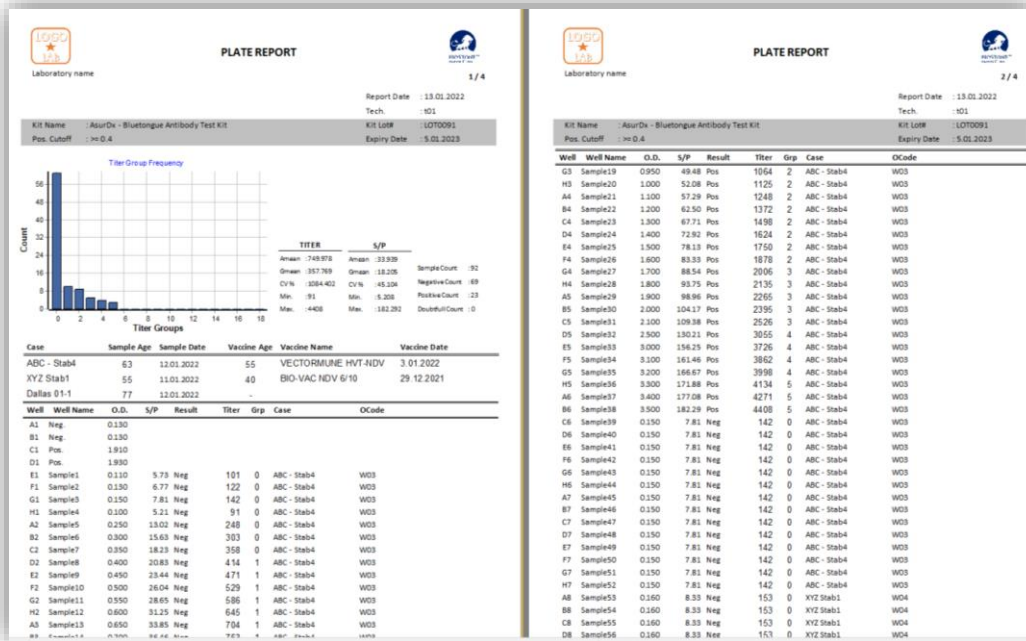
Plate Report

- Reports
- Plate Report

It creates a report of a selected plate, regardless of the customer.



Existing reports are displayed by selecting "Starting Date" and "End Date" and "Kit No". If the "List" button is pressed without making any selection, the reports of the day are listed. Press the 'Print' button for the preview report. You can save the report as a PDF or send it directly to the printer.

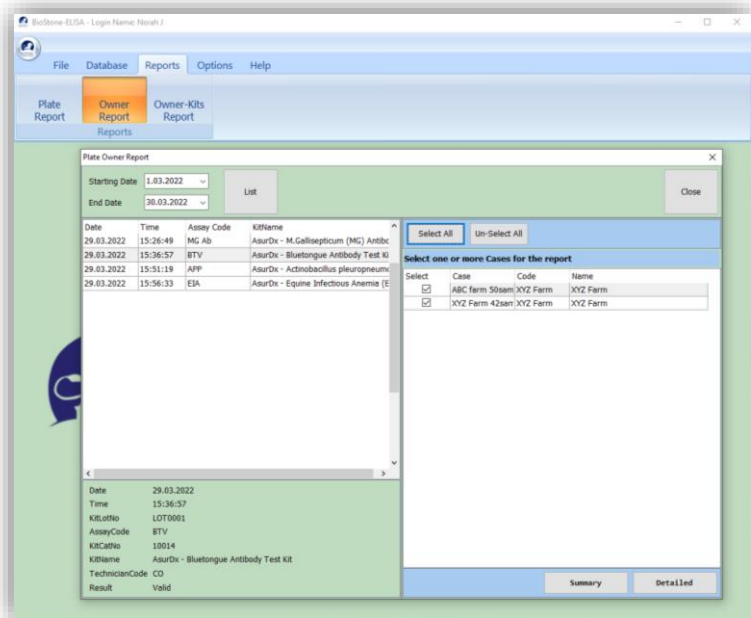


'Plate Report' outputs the entire plate report regardless of customer(owner). Use other reports for customer-specific evaluation.

[Back to Index](#)

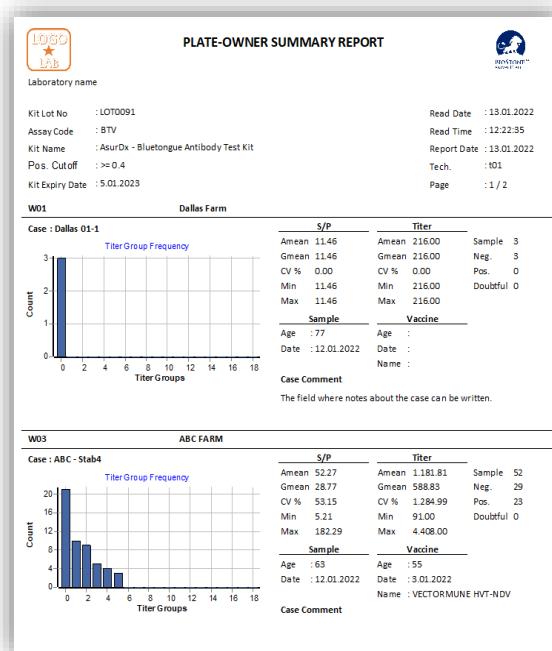
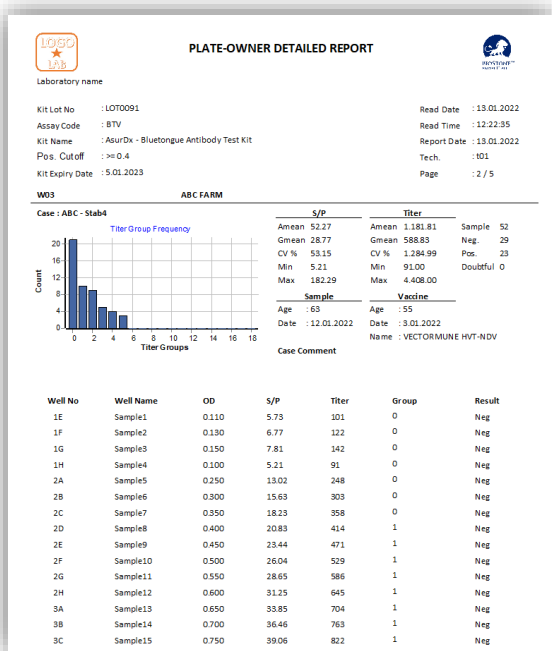
Owner (Customer) Report

- Reports
- Owner Report



It gives the opportunity to separately report more than one customer in a plate.

Available reports are displayed by selecting "Start Date" and "End Date". If the "List" button is pressed without making any selection, the reports of the day are listed. A report is selected from the list on the left. Customers included in the selected report are displayed on the right screen. By selecting one or more customers, the report of that customer is selected. Press the "Detailed" or "Summary" button for the report. You can save the report as a PDF or send it directly to the printer.

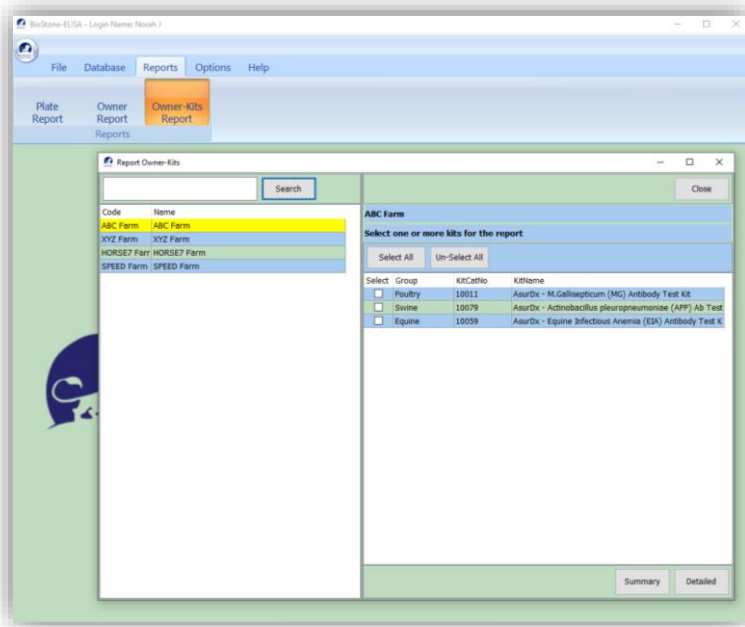


With 'Plate-Owner Report', it gives a single customer report and/or multiple customer reports on a plate. This report can be used for customer-based evaluation.

[Back to Index](#)

Kit Report

- Reports
- Kit Report



Creates all reports for the selected customer and kit.

As the first step, a customer (Owner) is selected. If there are registered tests belonging to the selected customer, the results are listed in the right section. A report can be obtained by selecting one or more of the listed results. The received report includes all reports of the selected customer and kit. (If you want to report for a single scan, use the 'plate-owner' reporting.)

Press the "Detail" or "Summary" button for the report. You can save the report as a PDF or send it directly to the printer.



[Back to Index](#)

BACKUP

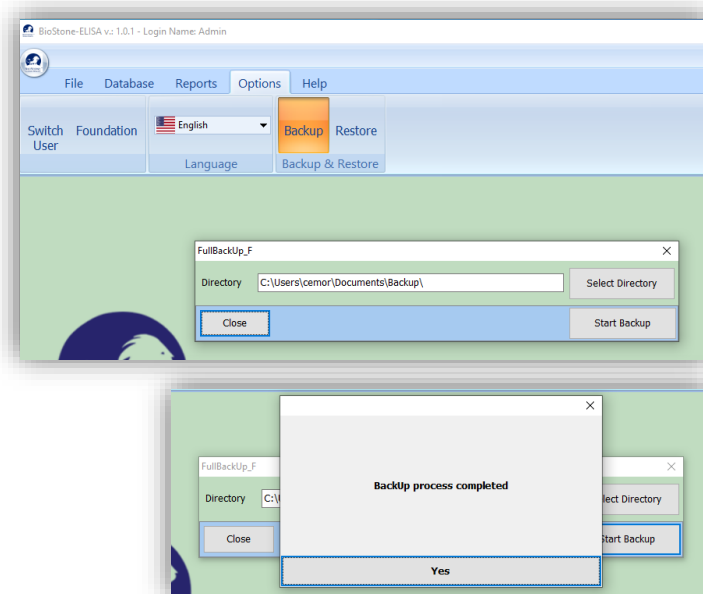
Program and data are backed up as a whole. It provides full recovery in disaster situations such as PC crash, program deletion... etc. No automatic backups are made. The user can take backups at any time.

The backup file can be made to a folder of the user's choice. The file name is created automatically.
For example: BioStoneElisa_FB_20221123_110247.db3

As can be seen in the file name, the backup file name is formed according to the date and time of the backup. This file can be stored in your backup unit or in different folders.

Backup with Admin user

- Options
- Backup
 - Select Directory
 - Choose a folder or create a new one
 - Start Backup



RESTORE

For the restore, please follow below steps :

Step.1 A new BiostoneELISA program is installed.

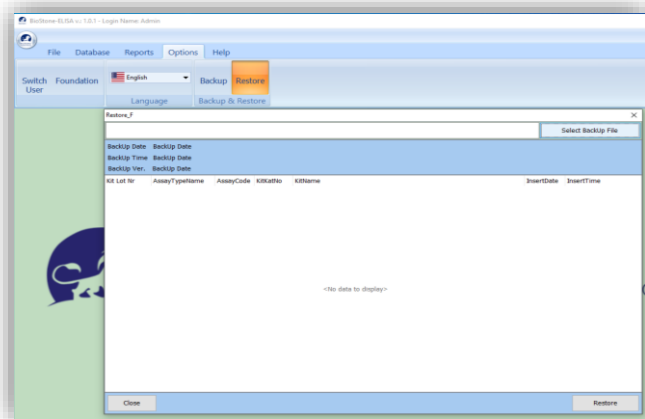
Step.2 Restore is done without a new scan.

(The readings between the new program installation and the restore operations will disappear.)

Attention! Do not restore on a program with data. The restore operation deletes the old data files and loads the backup file. Only the Admin user is authorized to do this.

Restore with Admin user

- Options
- Restore
 - Select Backup File
 - Select the backup file
 - Restore



Recommendation: It is recommended to "Update Application" after the restore. Please see page 4.

Notes:

- * It is possible to make a backup by simply copying the "c:/biostone" folder. Backups only work on the PC from which the backup was taken.
- * Existing data will be destroyed in the restore process, and the data in the backup will be replaced.

[Back to Index](#)

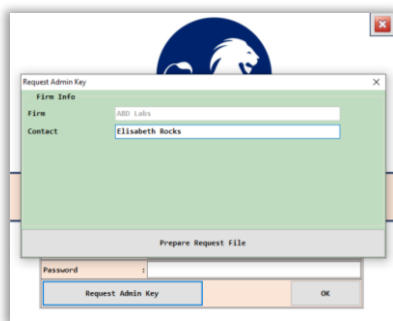
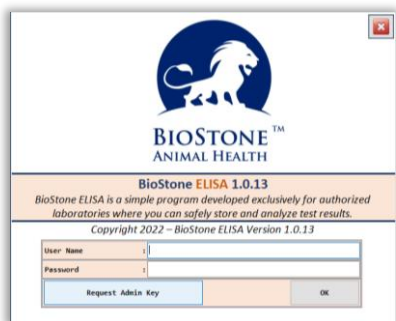
ADMIN PASSWORD RECOVERY

The admin password can be forgotten for any reason. You will need an Admin user for various updates and to create a Technician user or change their password.

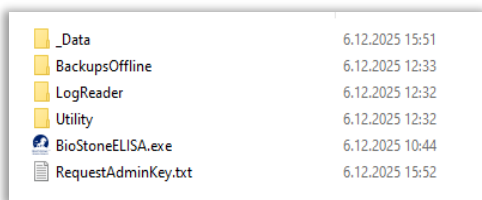
The following steps apply to versions 1.0.13 and later.

Steps to create a new admin user password:

- Click the "Request Admin Key" button at the bottom of the program's login screen.
- See your company name on the screen and enter your name and surname in the Contact section.

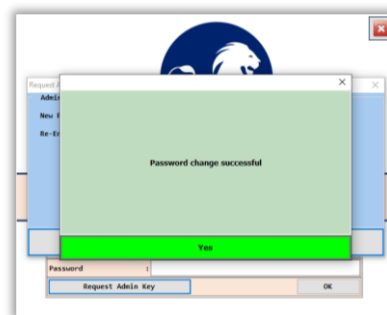
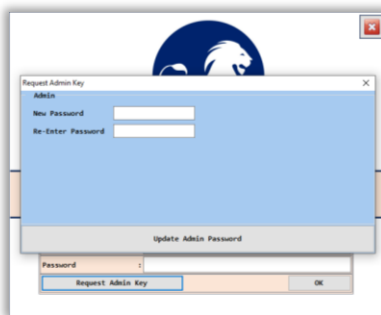
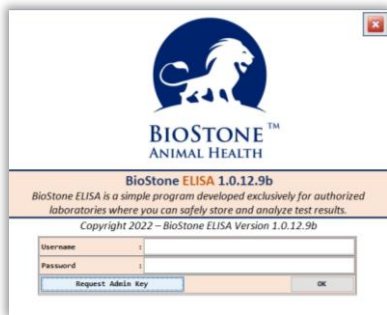


- Click the "Prepare Request File" button. An information screen like the one below will appear.
- Make a note of the folder name specified here.
- Go to the folder specified in the message and copy the "RequestAdminFile.txt" file. Email this file to BioStone.



- After verifying your identity, BioStone will send you the "ResponseAdminKey.txt" file.
- Copy the "ResponseAdminKey.txt" file into the BioStone ELISA program folder.
- Run the Biostone ELISA program. Click the "Request Admin Key" button at the bottom of the program's login screen.

| | |
|----------------------|-----------------|
| _Data | 6.12.2025 15:51 |
| BackupsOffline | 6.12.2025 12:33 |
| LogReader | 6.12.2025 12:32 |
| Utility | 6.12.2025 12:32 |
| BioStoneELISA.exe | 6.12.2025 10:44 |
| RequestAdminKey.txt | 6.12.2025 15:52 |
| ResponseAdminKey.txt | 6.12.2025 15:56 |



- New password entry options will appear on the screen. Create your new password and click the "Update Admin Password" button. You will receive a message that the password has been successfully changed.
- Make a note of your new password.